

GETRIEBEBAU NORD

Member of the NORD DRIVESYSTEMS Group

Getriebebau NORD GmbH & Co. KG

Getriebebau-Nord-Straße 1 • 22941 Bargteheide, Germany • www.nord.com



SK EMC2-5

Part number: 275 999 051

EMC KIT

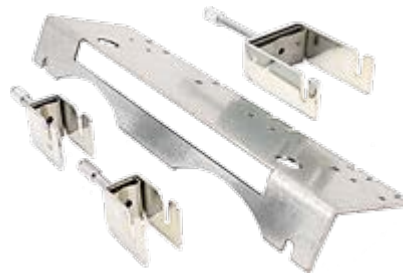
NOTICE

Validity of document

This document is only valid in combination with the operating instructions for the particular frequency inverter. Only these documents contain all of the information that is required for safe commissioning of the module and the frequency inverter.

Scope of delivery

1 x	Shield bracket	
1 x	Shielding terminal	SK 35
2 x	Shielding terminals	SK 14



Field of use

Frequency inverters have been developed for operation in industrial environments. In these environments, the device may be subject to high electromagnetic interferences or emit them itself. Using the EMC kit minimises these interferences. It is furthermore the basis for optimum EMC-compliant cabling. As an alternative, the EMC kit can also be used as a strain relief (e.g. for the connecting cable of a bus system) (observe bending radii!)

Frequency inverter assignment

Permissible frequency inverters	Size	Power
SK 5xxE-152-323 ... SK 5xxE-182-323-	7	15 kW ... 18 kW
SK 5xxE-302-340 ... SK 5xxE-372-340-	7	30 kW ... 37 kW

Technical data

Material	Galvanised sheet metal
Fastening	Available on the housing
Weight [kg]	≈ 0.3

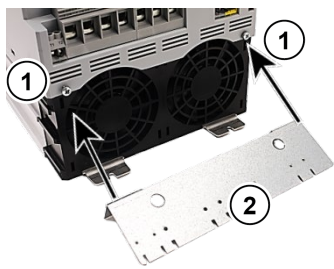

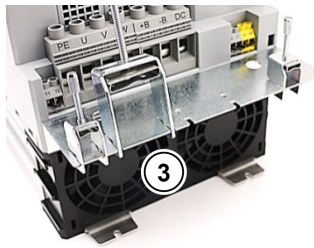
Dimensions [mm] Width x Depth	205 x 57
Tightening torque [Nm] Shielding terminal SK 14	0.8
Shielding terminal SK 35	1.5–1.8

Technical Information / Datasheet	SK EMC2-5			
EMC kit	TI 275999051	V 1.0	3224	en

Installation

Installation location	Lower edge (below the U - V - W terminals) on the housing screws
Fastening	By using existing fastening screws

Installation steps ¹⁾

1.	<ul style="list-style-type: none"> Loosen but do not remove housing screws (1) Hang shield bracket (2) between screw head and housing 	
2.	<ul style="list-style-type: none"> Tighten housing screws (1) again 	
3.	<ul style="list-style-type: none"> Arrange shielding terminals (3) on shield bracket, depending on requirements Pass through connection cable Tighten shielding terminal screw taking into account the tightening torque <p>Connect cable shields over a large area with shielding terminals!</p>	

1) Illustration similar for different sizes.

Further documentation and software www.nord.com

Document	Designation
BU_0500	Frequency inverter manual SK 500E – SK 535E

Document	Designation
BU_0505	Frequency inverter manual SK 54xE